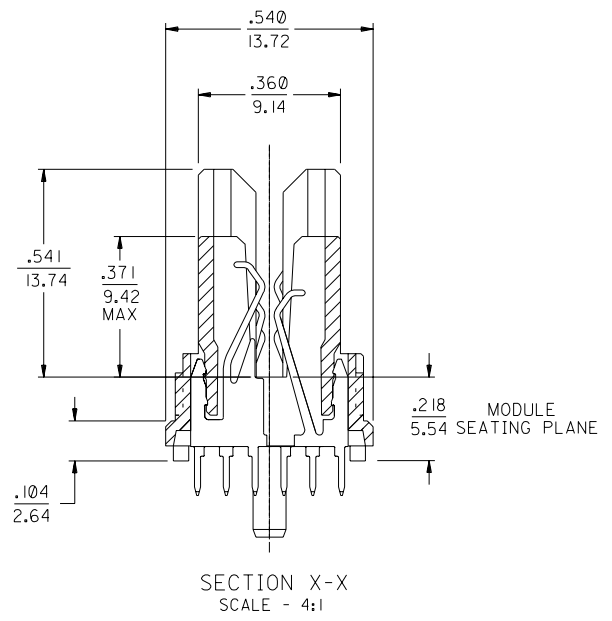
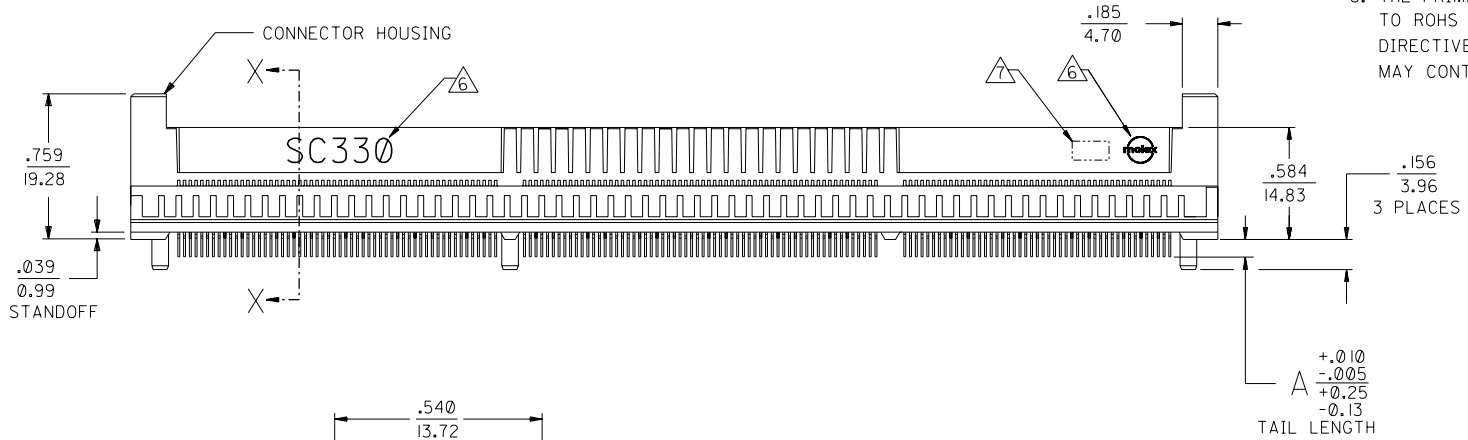
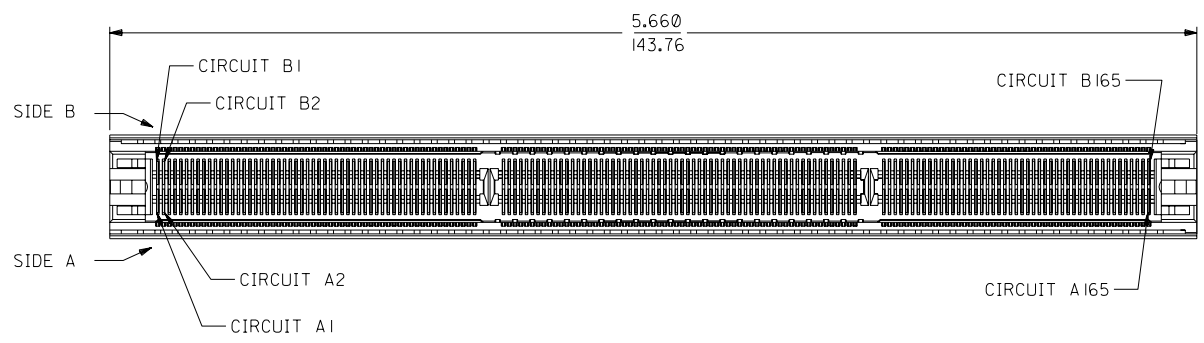


NOTES:

- MATERIALS:
HOUSING - LCP, 30% GLASS FILLED, 94-V0, BLACK.
TERMINALS - PHOSPHOR BRONZE.
- FINISH:
TERMINALS - .000030/0.00076 MINIMUM GOLD IN THE CONTACT AREA AND .000075/0.0019 MINIMUM TIN IN SOLDER TAIL AREA OVER .000050/0.0013 MINIMUM NICKEL OVERALL.
- PRODUCT SPECIFICATION PS-71109-9990 APPLIES.
- CARD SLOT ACCEPTS .062 +.007/-.005 P.C. BOARD.
- THE RECOMMENDED PLATING SPECIFICATION FOR THE MATING PC BOARD IS .000030/0.0076 MINIMUM GOLD OVER .000075/0.0019 MINIMUM NICKEL.
- "SC330" AND MOLEX LOGO SHALL APPEAR ON BOTH SIDES OF HOUSING, AND LOCATED APPROXIMATELY AS SHOWN.
- FOUR DIGIT DATE CODE (YR/WK) SHALL BE LOCATED APPROXIMATELY AS SHOWN.
- THE PRIMARY SHIPPING CARTON WILL BE LABELED "COMPLIANT TO ROHS DIRECTIVE 2002/95/EC AND ELV ANNEX II OF DIRECTIVE 2000/53/EC". CARTONS WITHOUT THIS LABEL MAY CONTAIN PRODUCT WITH LEAD.



71109-2007	.140/3.56
71109-2006	.115/2.92
71109-2005	.090/2.29

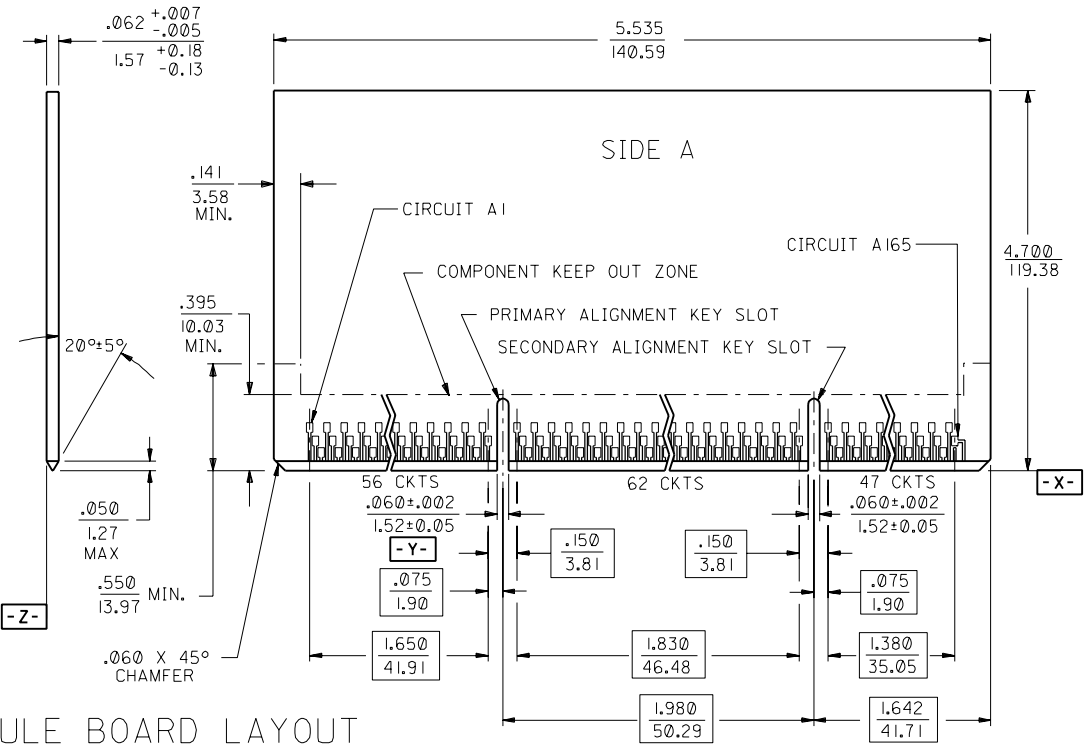
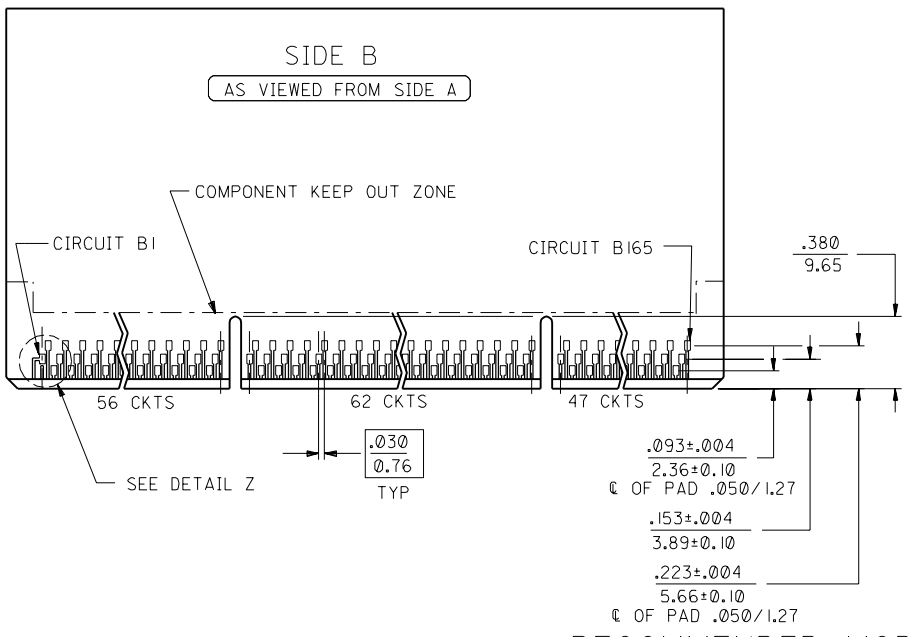
MAT'L NUMBER A

PLATING CHANGE	EC NO. UCP2004-2347	DRWNR WHITE 04/05/21	CHK: BBARKER 04/05/21	APPR: SMILLER 04/05/21
DESCRIPTION	MAJOR	CRITICAL		
REV	H			

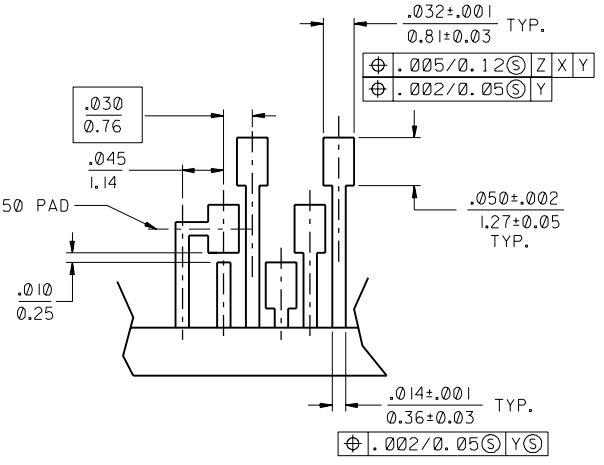
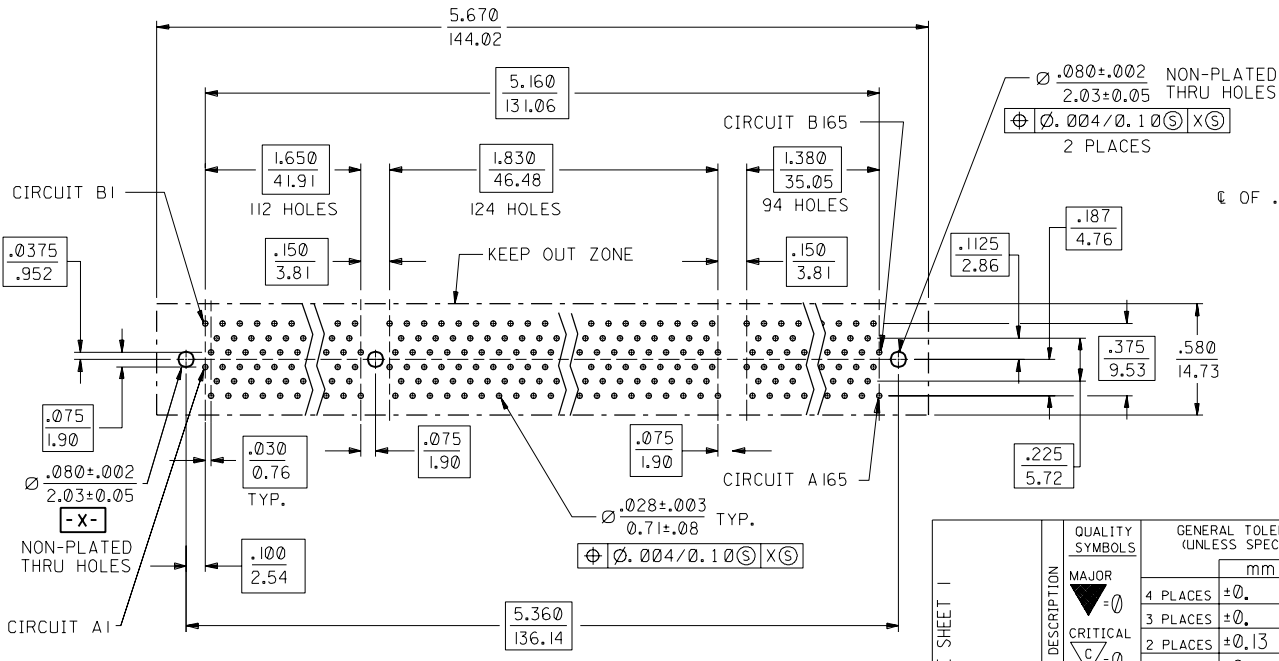
QUALITY SYMBOLS	GENERAL TOLERANCES: (UNLESS SPECIFIED)	SCALE 2 : 1	DESIGN UNITS <input type="checkbox"/> mm <input checked="" type="checkbox"/> INCH	THIRD ANGLE PROJECTION <input type="checkbox"/> mm <input checked="" type="checkbox"/> INCH
MAJOR	mm	INCH	DRAWN BY & DATE	
CRITICAL	4 PLACES ±0.	±.	NELSON 06/20/97	
	3 PLACES ±0.	±.005	CHECKED BY & DATE	
	2 PLACES ±0.13	±.	NELSON 06/20/97	
	1 PLACE ±0.	±.	APPROVED BY & DATE	
			FUNCK 06/20/97	
	ANGULAR: ± 1 °			
DRAFT WHERE APPLICABLE MUST REMAIN WITHIN DIMENSIONS				

CAD FILENAME	MATERIAL NO.	DRAWING NO.	SHEET NO.
S7110966.S01	SEE TABLE	SD-71109-203	1 OF 2

DIMENSIONS: <input type="checkbox"/> mm <input checked="" type="checkbox"/> INCH <input type="checkbox"/> mm ONLY		2 F
TITLE: SALES ASSEMBLY SC330 "HiSpec" CONNECTOR W/PLASTIC PEGS		I H
MOLEX INCORPORATED		REV
THIS DRAWING CONTAINS INFORMATION THAT IS PROPRIETARY TO MOLEX INCORPORATED AND SHOULD NOT BE USED WITHOUT WRITTEN PERMISSION.		REVISE ON CAD ONLY



RECOMMENDED MODULE BOARD LAYOUT



DETAIL Z
SCALE 10:1

RECOMMENDED PCB HOLE LAYOUT

SEE SHEET 1	REV	DESCRIPTION	QUALITY SYMBOLS	GENERAL TOLERANCES: (UNLESS SPECIFIED)	SCALE 2:1	DESIGN UNITS	THIRD ANGLE PROJECTION	DIMENSIONS:	SHT	REV
			MAJOR	mm	INCH	mm	INCH	mm	INCH	mm
EC NO.	DRWN:	CHK:	APPR:	4 PLACES ±0.	±.	DRAWN BY & DATE	TITLE:	SALES ASSEMBLY		
F				3 PLACES ±0.	±.005	NELSON 06/20/97	SC330 "HiSpec" CONNECTOR			REVISION ON CAD ONLY
				2 PLACES ±0.13	±.	NELSON 06/20/97	W/PLASTIC PEGS			
				1 PLACE ±0.	±.	APPROVED BY & DATE	MOLEX INCORPORATED			
				ANGULAR: ± 1°		FUNCK 06/20/97	MATERIAL NO. SEE TABLE			
						CAD FILENAME	DRAWING NO. SD-71109-203			
						S7110966.S02	SHEET NO. 2			
						DRAFT WHERE APPLICABLE MUST REMAIN WITHIN DIMENSIONS				
						THIS DRAWING CONTAINS INFORMATION THAT IS PROPRIETARY TO MOLEX INCORPORATED AND SHOULD NOT BE USED WITHOUT WRITTEN PERMISSION.				